

ONE
CROWN
SQUARE

ONE CROWN SQUARE

WOKING | GU21 6HR

FLEXIBLE SPACE AVAILABLE ACROSS 8 FLOORS



WORKSPACE®

FIRST CLASS FEATURES

One Crown Square offers a host of premium building features:



COMFORT COOLING



PERIMETER TRUNKING



SUSPENDED CEILINGS



LED LIGHTING



PERSON LIFTS



SHOWER ROOM



BICYCLE PARKING



MANNED RECEPTION



HIGH QUALITY KITCHENETTES



BOOKABLE MEETING ROOMS



ON-SITE CAFÉ

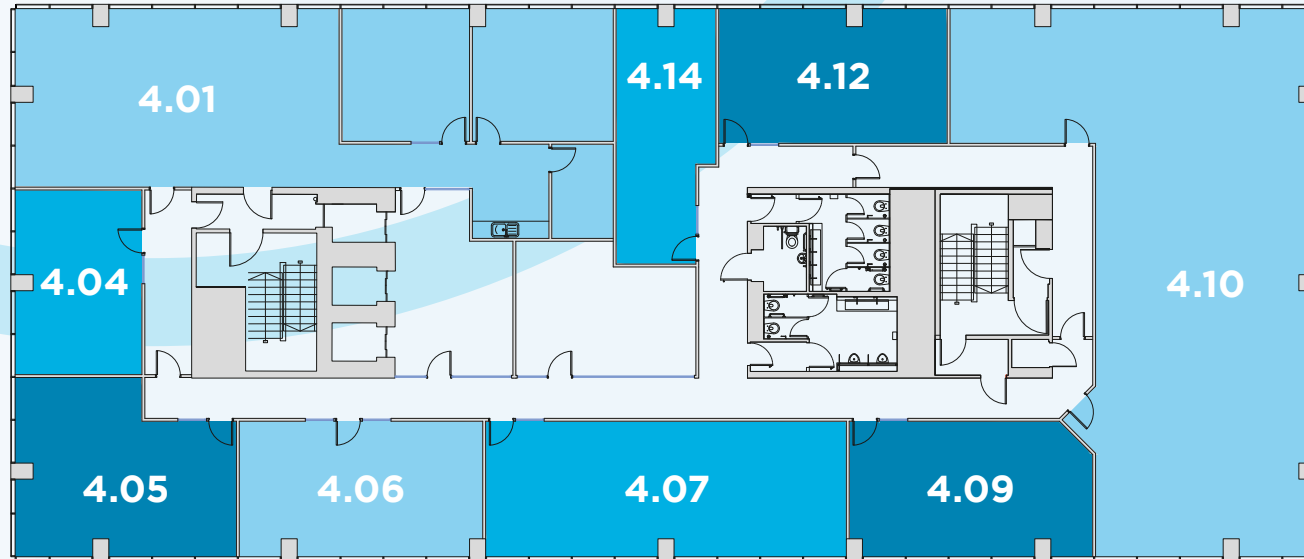


EPC RANGING FROM B-E
(depending on floor)



EXCELLENT NATURAL LIGHT

SMALL & MEDIUM SIZE UNIT OPTIONS

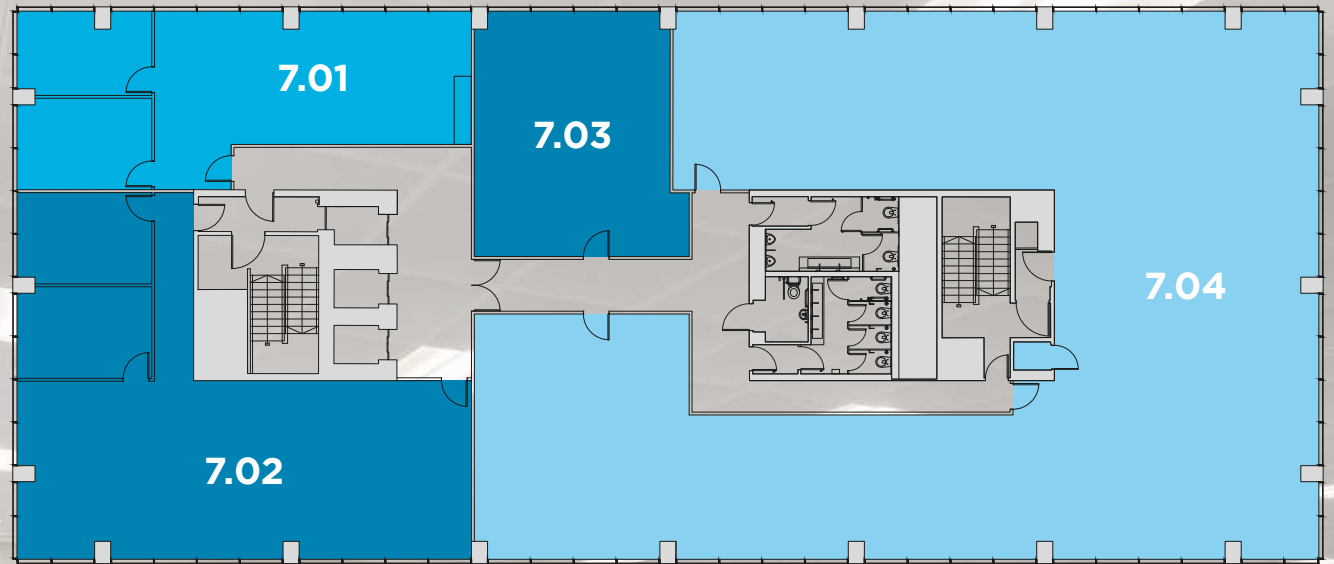


Indicative areas - smaller options from 160 sq ft to 2,000 sq ft.

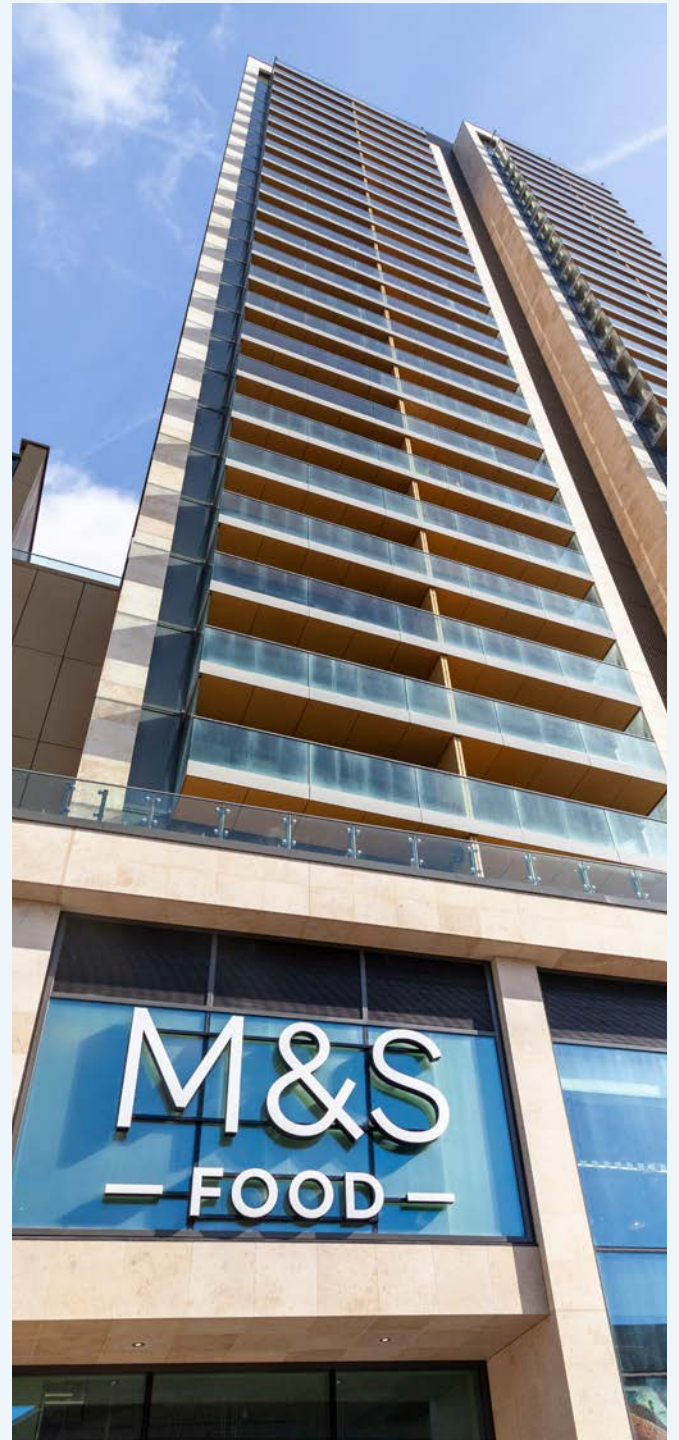
Lease flexibility is offered. Minimum terms 6 months upwards are available.

Full details on request.

Indicative areas -
2,200 sq ft, 4,761 sq ft.



LARGER
UNIT OPTIONS



SPACE TO CONNECT

200
METRES

TO MANLINE
TRAIN
STATION

15
TRAINS

PER HOUR TO
LONDON

25
MINS

LONDON
WATERLOO
STATION

4.5
MILES

BY CAR TO M25
JUNCTION 11

17
MILES

BY CAR TO
HEATHROW
AIRPORT



One Crown Square is in a prime position for occupiers to benefit from Woking's superb communications.

One Crown Square has a thriving community and is home to a diverse mix of businesses in sectors such as finance, insurance, commodities and real estate.



CONTACT

AGENTS



01483 446 800
vailwilliams.com

GEORGE O'CONNOR
T: 07836 544564
E: goconnor@vailwilliams.com

NATALIE FURTADO
T: 07584 034875
E: nfurtado@vailwilliams.com



01483 300176
owenisherwood.com

PETER DA SILVA
T: 07768 146953
E: pds@owenisherwood.com

ALEX BELLION
T: 07971 756068
E: alex@owenisherwood.com



WORKSPACE[®]

Home to London's brightest businesses

Workspace provides London commercial properties designed to support entrepreneurs and small businesses, tailored for individual business needs. As the leading commercial property company in London, Workspace owns more than 3.7 million square feet of office and studio space, providing homes for over 3,000 businesses in the capital.