

BRIDGE POINT BARKING  
ALFREDS WAY, IG11 9PG  
///vent.noisy.frosted

 **BRIDGE**

# BRIDGE POINT **BARKING**

---

**50,618 SQ FT (4,703 SQ M)**

PRIME LAST MILE

LOGISTICS WAREHOUSE

**TO LET**





**Bridge Point Barking is a centrally located, detached and self-contained distribution warehouse/ industrial unit, totalling 50,618 Sq Ft.**

It has great access to the A13, with direct routes to East London and Essex. The immediate area is an established industrial location, popular with self-storage and trade counter operators.



Central London

A13

A13



# DESIGNED TO DRIVE LOGISTICS FORWARD



**10.3%**

\*the population employed in the transport and storage sector (Double the UK average)

**7,800**

People locally actively looking for work



**3,417**

\*Economically active people live in Barking



**3,038,870**

\*people within a 15 mile radius



**4,500+**

\*People are employed in the manufacturing sector.

SOURCE : nomisweb.co.uk, freemaptools.com



Area	Sq Ft	Sq M
Warehouse	47,552	4,418
Offices	3,066	285
<b>Total GEA</b>	<b>50,618</b>	<b>4,703</b>



# BUILT TO LAST MADE TO DELIVER

Bridge Point Barking has been designed to incorporate an exceptional specification benefitting from the following:



Fibre Optic  
Internet Ready



2 Storey  
Offices



Comfort Heating  
/ Cooling



Classes Eg(ii),  
Eg(iii), B2 And B8



LG7  
Lighting



50M Fully  
Secure Yard



PV  
Panels



Fm1  
Warehouse Floor



400  
KvA



24/7  
Unrestricted Use





# WITH THE FUTURE OF LOGISTICS IN MIND

## ESG Credentials

Bridge Point Barking has been designed with a sustainable future in mind, featuring best in class ESG credentials to cater for modern-day & future occupational requirements. Through state of the art design features, operational costs are minimised.



Efficient Water Fittings



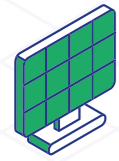
BREEAM Excellent



Net Zero Carbon



Cycle Parking



PV Panels



EV Charging Points & Car Sharing Space



Air Source Heat Pump



EPC A Rating

## Operational Cost Savings

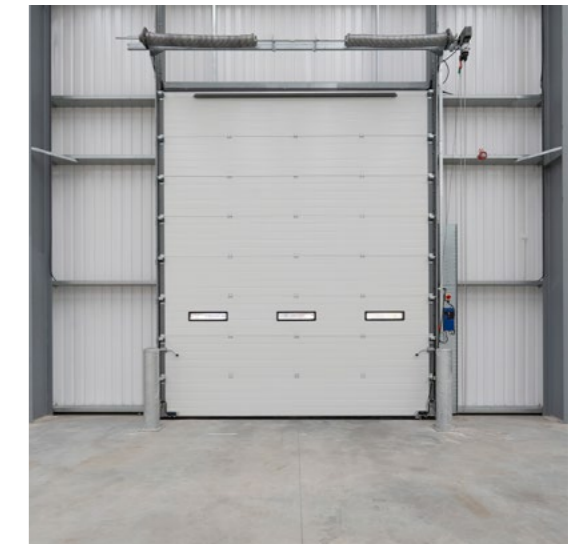
**Maximum PV Coverage**  
Producing 259.12 kW per annum\*



**Cost Savings**  
£1.46 per sq ft per annum\*



**CO<sup>2</sup> Savings**  
58 ton saving per annum\*



\*Estimated figures - more information available on request



# From Barking to Central London in 20 minutes

With easy access to **Central London** and the wider **motorway networks**.



A13 - 0.1 miles  
A406 - 0.7 miles  
M25 J30 - 10.9 miles  
Central London - 5.4 miles



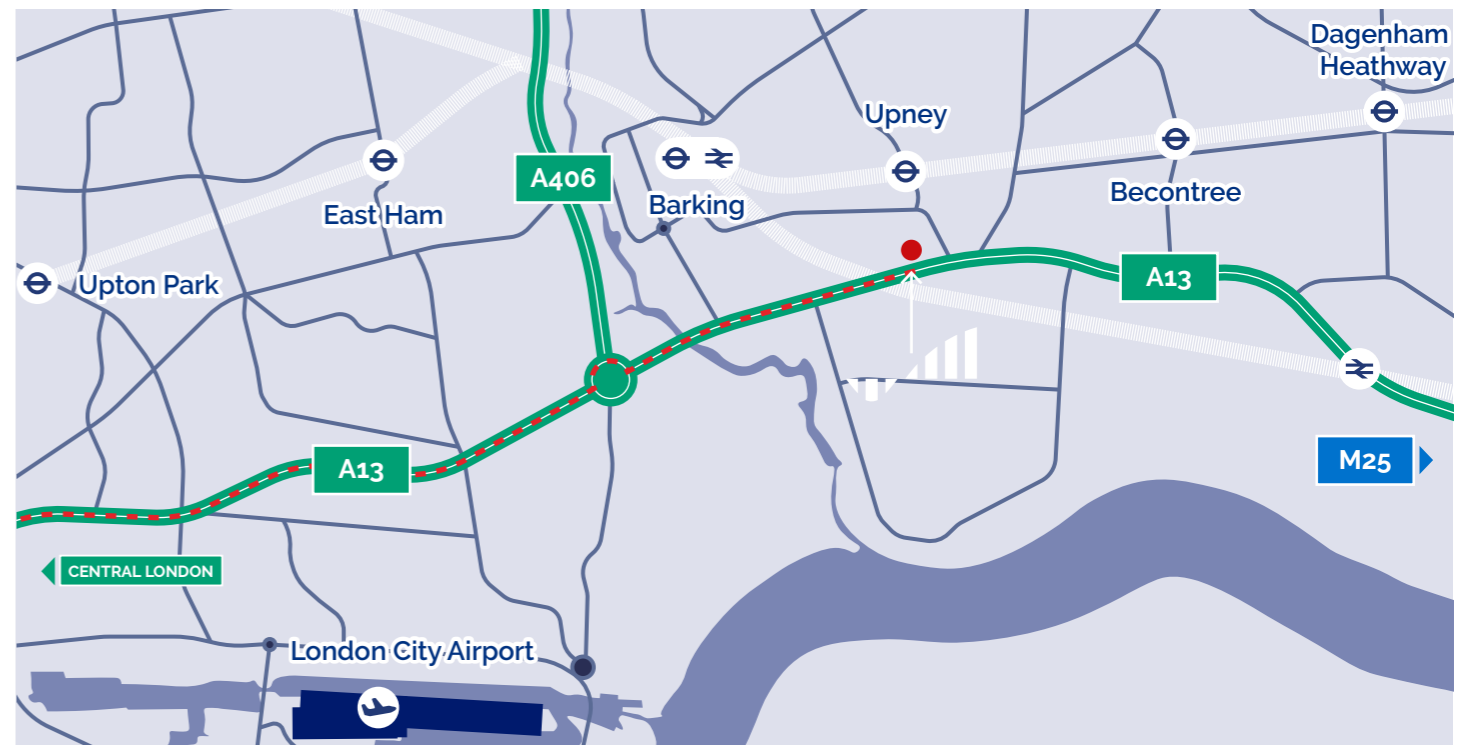
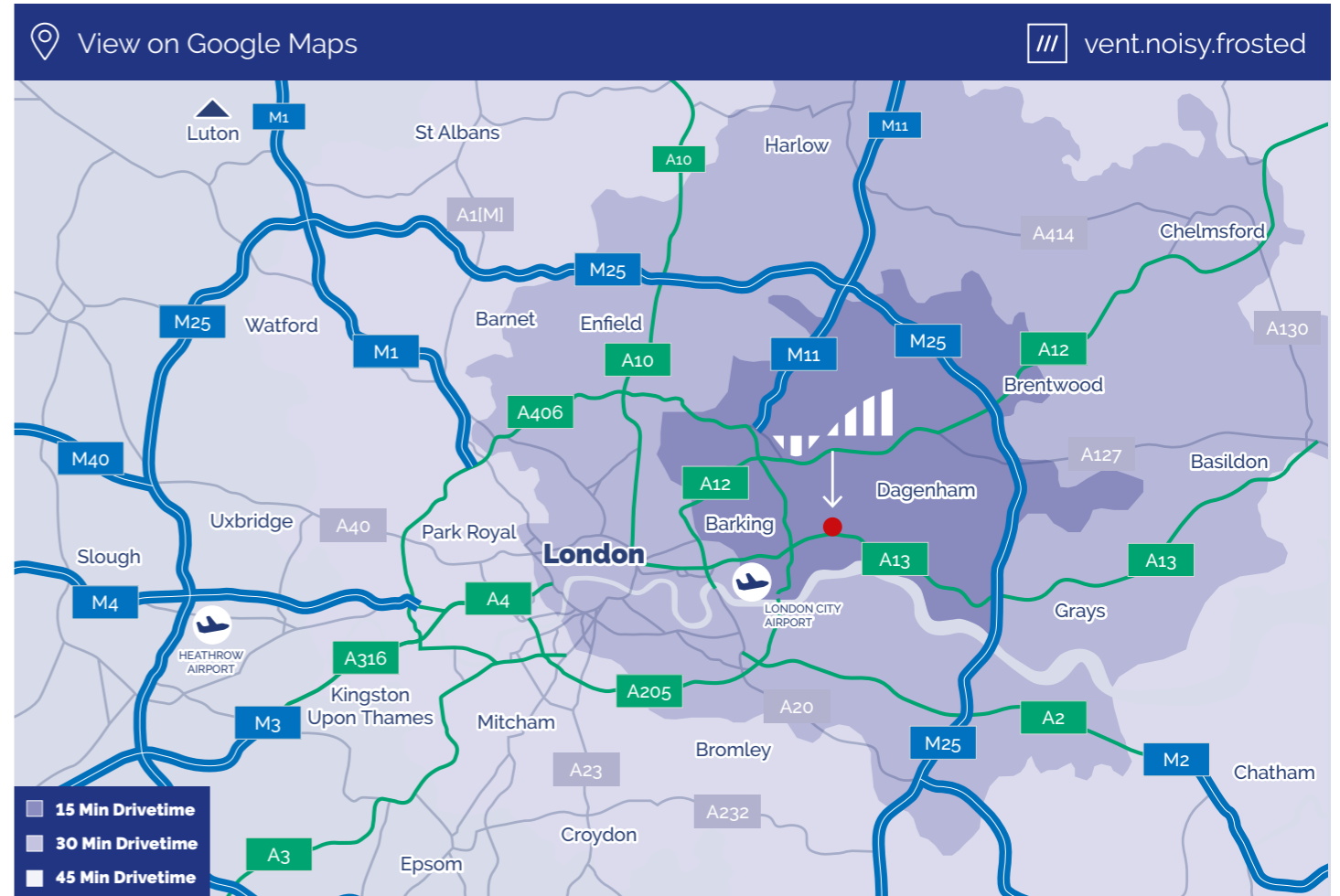
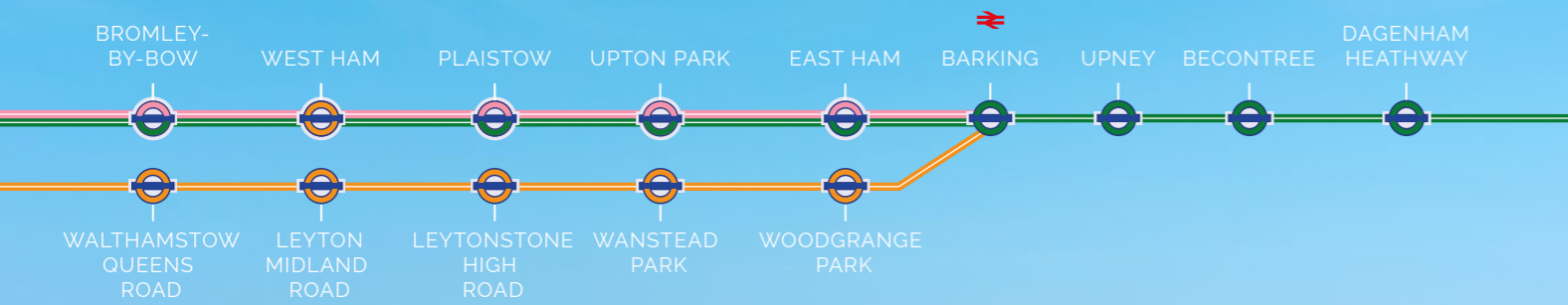
Barking - 0.6 miles  
Stratford - 3.0 miles  
Liverpool Street - 15.5 miles  
Ebbfleet - 21.0 miles



DP World - 19 miles  
Dover - 76 miles



London City - 4.7 miles  
Stansted - 29.4 miles





## Terms

The unit will be available by way of a new FR&I lease on terms to be agreed.

## Further Information

For further information please contact the below agents:

## DTRE

### Jake Huntley

jake.huntley@dtre.com  
07765 154 211

### Charlie Wing

charlie.wing@dtre.com  
07483 068 030



### Akhtar Alibhai

akhtar.alibhai@colliers.com  
07909 684 801

### Tim Harding

tim.harding@colliers.com  
07860 180 328



### Peter Higgins

p.higgins@glenny.co.uk  
07900 990 805

### John Bell

j.bell@glenny.co.uk  
07766 225 489

**BRIDGE Is A Vertically Integrated Real Estate Operating Company And Investment Manager Focused On The Acquisition And Development Of Class A Industrial Properties.**

