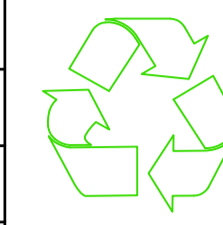


THIS DRAWING IS PROTECTED UNDER COPYRIGHT. THIS DRAWING IS NOT TO BE REPRODUCED IN WHOLE OR PART UNLESS AUTHORISED BY

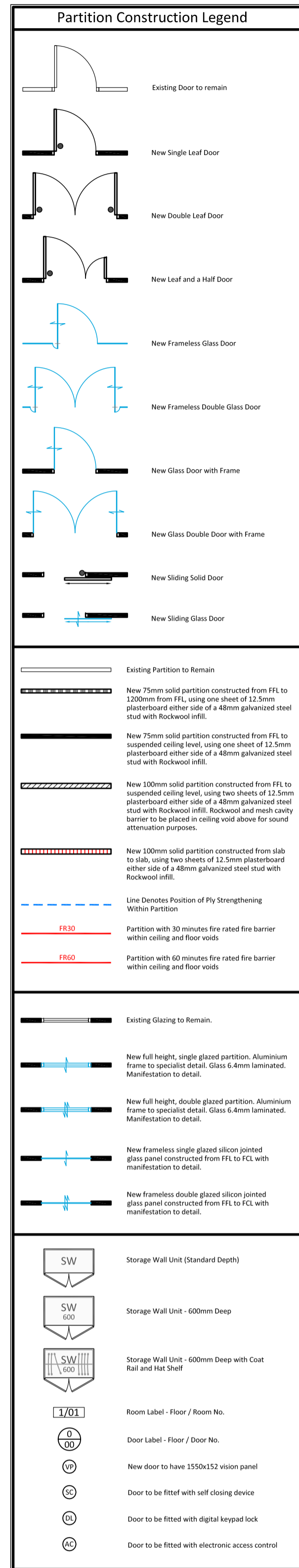
area² COPYRIGHT

THIS DRAWING IS NOT TO BE SCALED. THE GENERAL CONTRACTOR IS TO CHECK ALL DIMENSIONS AND NOTIFY THE DESIGNERS OF ANY DISCREPANCIES OR OMISSIONS.

DRAWING TO BE READ IN CONJUNCTION WITH SCOPE OF WORKS

CEILING HEIGHT		 <p>THIS DRAWING IS ON RECYCLED PAPER</p>
BEAM HEIGHT		
WINDOW HEIGHT		
SILL HEIGHT		

Partition Construction Legend



Existing Door to remain

New Single Leaf Door

New Double Leaf Door

New Leaf and a Half Door

New Frameless Glass Door

New Frameless Double Glass Door

New Glass Door with Frame

New Glass Double Door with Frame

New Sliding Solid Door

New Sliding Glass Door

Existing Partition to Remain

New 75mm solid partition constructed from FFL to suspended ceiling level, using one sheet of 12.5mm plasterboard either side of a 48mm galvanneal steel stud with Rockwool infill.

New 75mm solid partition constructed from FFL to suspended ceiling level, using two sheets of 12.5mm plasterboard either side of a 48mm galvanneal steel stud with Rockwool infill. Rockwool and mesh cavity batten to be placed in ceiling void above for sound attenuation purposes.

New 100mm solid partition constructed from slab to slab, using two sheets of 12.5mm plasterboard either side of a 48mm galvanneal steel stud with Rockwool infill.

New 100mm solid partition constructed from slab to slab, using two sheets of 12.5mm plasterboard either side of a 48mm galvanneal steel stud with Rockwool infill.

Line Denotes Position of Ply Strengthening Within Partition

FR30 Partition with 30 minutes fire rated fire barrier within ceiling and floor voids

FR60 Partition with 60 minutes fire rated fire barrier within ceiling and floor voids

Existing Glazing to Remain

New full height, single glazed partition. Aluminium frame to specialist detail. Glass 6.4mm laminated. Manufacture to detail.

New full height, double glazed partition. Aluminium frame to specialist detail. Glass 6.4mm laminated. Manufacture to detail.

New frameless single glazed silicon jointed glass panel constructed from FFL to FFL with manufacture to detail.

New frameless double glazed silicon jointed glass panel constructed from FFL to FFL with manufacture to detail.

SW Storage Wall Unit (Standard Depth)

SW 600 Storage Wall Unit - 600mm Deep

SW 1000 Storage Wall Unit - 600mm Deep with Coat Rail and Hat Shelf

1/01 Room Label - Floor / Room No.

0/00 Door Label - Floor / Door No.

New door to have 350x152 vision panel

Door to be fitted with self closing device

Door to be fitted with digital keypad lock

Door to be fitted with electronic access control

DATE	REV	REVISIONS	SIGN	CHKD



Fourfront Group

The Old Post Office | 5th Floor,
33 Station Road, | Counting House,
Egham, | 53 Tooley Street,
Surrey TW20 9LA | London SE1 2QN

T. 01784 274000 | T. 020 7089 6000

info@areasq.co.uk | www.areasq.co.uk

DRAWING STATUS

INFORMATION ONLY

CLIENT

PROJECT

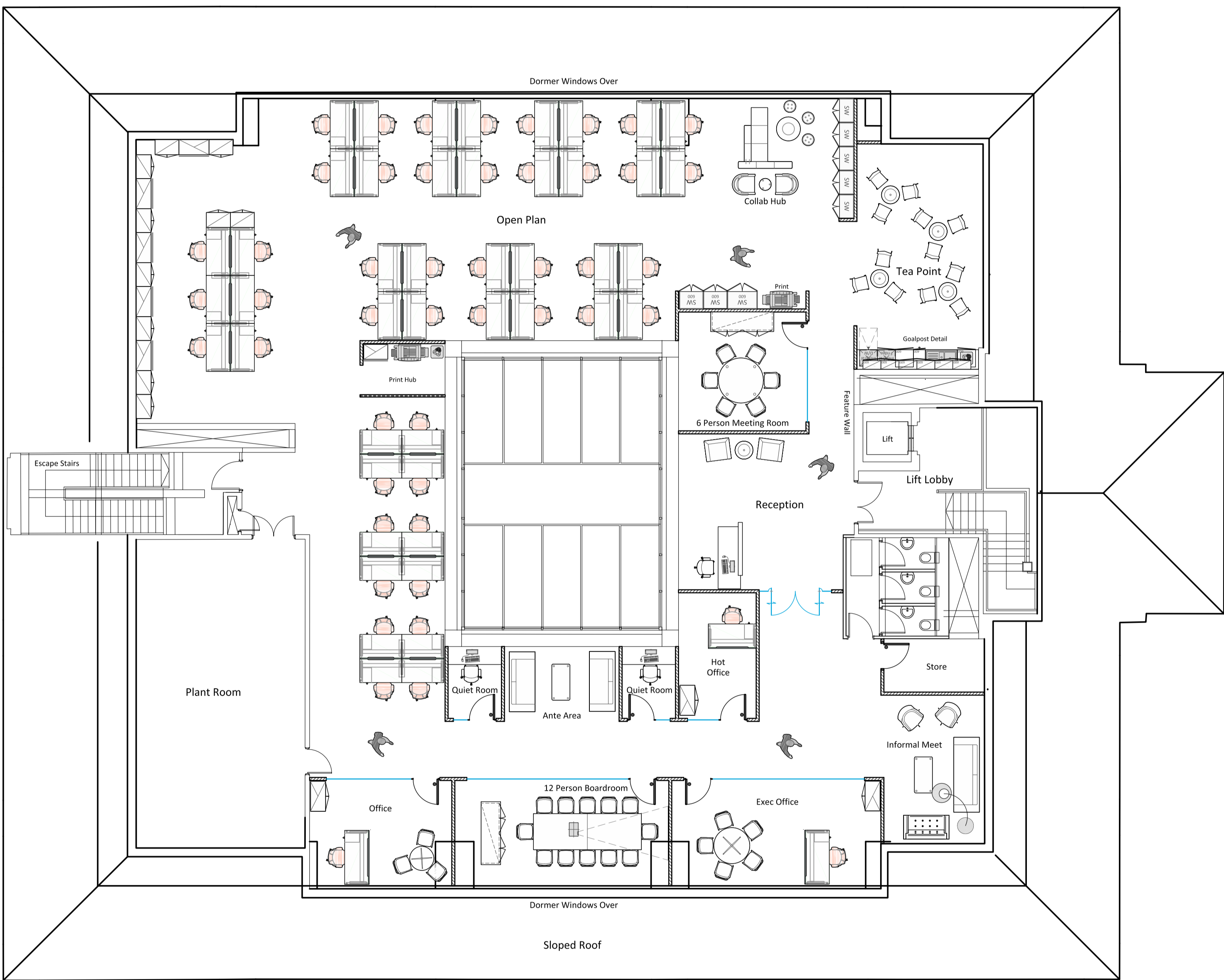
Building 2
Dorking Office Park
Station Road
Dorking Road, Surrey
RH4 1HJ

TITLE

Test Fit Plan
1:8 Occupancy Ratio
Second Floor

SCALE 1:100 @ A1

DATE	06.03.17	DRAWN	RP	CHECKED	JS
PROJECT NO	XXXX	BLDG.	02	FLOOR	02
				DETAIL	-
				REV.	-



Second Floor

Floor Schedule:
568 Sqm / 6113 Sqft

Workstations - 46

- 1 x Exec Office
- 1 x Offices
- 1 x Hot Office
- 2 x Quiet Rooms
- 6 Person Meeting Room
- Informal Meeting Space

12 Person Boardroom

- Teapoint
- Collaboration Zones
- 2 x Print Hubs
- Reception / Waiting Area
- Store

Test Fit Plan - Second Floor